

NATURAL WONDERS™

CMP Natural Wonders Waterfalls are a beautiful addition to any new or remodel pool or spa. A Natural Wonders Waterfall may be adjusted from a peaceful clear falling sheet of water to a bold, thundering water feature that adds excitement and style to your project.



PRODUCT FEATURES

- Lips available in 1", 6", 9" & 12" sizes
- Lips can be radius cut (see page 24)
- Available in white, gray, & tan
- Bottom port water inlet available on 48" length and smaller
- Heavy-duty PVC construction
- Requires only one GPM per inch

ORDERING GUIDE & DIMENSIONS

WHITE	TAN	GRAY	DESCRIPTION	WIDTH (W)	LENGTH (L)*
BACK PORT WATERFALLS					
25577-820-000	--	--	96" with 1" Lip	3.15"	95.13"
25577-830-000	--	--	96" with 6" Lip	8.07"	
25577-830-900	--	--	96" with 9" Lip	11.07"	
25577-830-120	--	--	96" with 12" Lip	14.07"	
25577-720-000	--	--	84" with 1" Lip	3.15"	83.24"
25577-730-000	--	--	84" with 6" Lip	8.07"	
25577-730-900	--	--	84" with 9" Lip	11.07"	
25577-730-120	--	--	84" with 12" Lip	14.07"	
25577-620-000	--	--	72" with 1" Lip	3.15"	71.57"
25577-630-000	--	--	72" with 6" Lip	8.07"	
25577-630-900	--	--	72" with 9" Lip	11.07"	
25577-630-120	--	--	72" with 12" Lip	14.07"	
25577-520-000	25577-529-000	25577-521-000	60" with 1" Lip	3.15"	59.88"
25577-530-000	25577-539-000	25577-531-000	60" with 6" Lip	8.07"	
25577-530-900	25577-539-900	25577-531-900	60" with 9" Lip	11.07"	
25577-530-120	25577-539-120	25577-531-120	60" with 12" Lip	14.07"	
25577-420-000	25577-429-000	25577-421-000	48" with 1" Lip	3.15"	47.36"
25577-430-000	25577-439-000	25577-431-000	48" with 6" Lip	8.07"	
25577-430-900	25577-439-900	25577-431-900	48" with 9" Lip	11.07"	
25577-430-120	25577-439-120	25577-431-120	48" with 12" Lip	14.07"	
25577-320-000	25577-329-000	25577-321-000	36" with 1" Lip	3.15"	35.67"
25577-330-000	25577-339-000	25577-331-000	36" with 6" Lip	8.07"	
25577-330-900	25577-339-900	25577-331-900	36" with 9" Lip	11.07"	
25577-330-120	25577-339-120	25577-331-120	36" with 12" Lip	14.07"	

*All "L" dimensions are +/- 0.33"

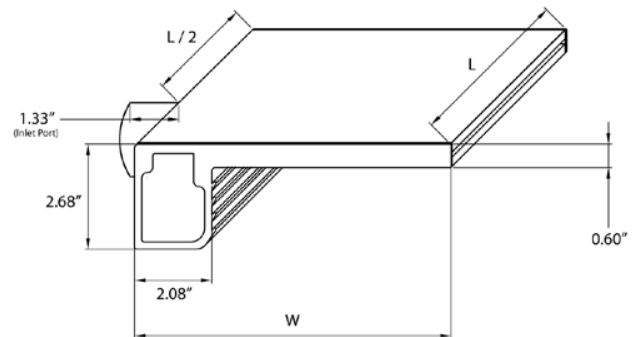
NATURAL WONDERS™ WATERFALLS

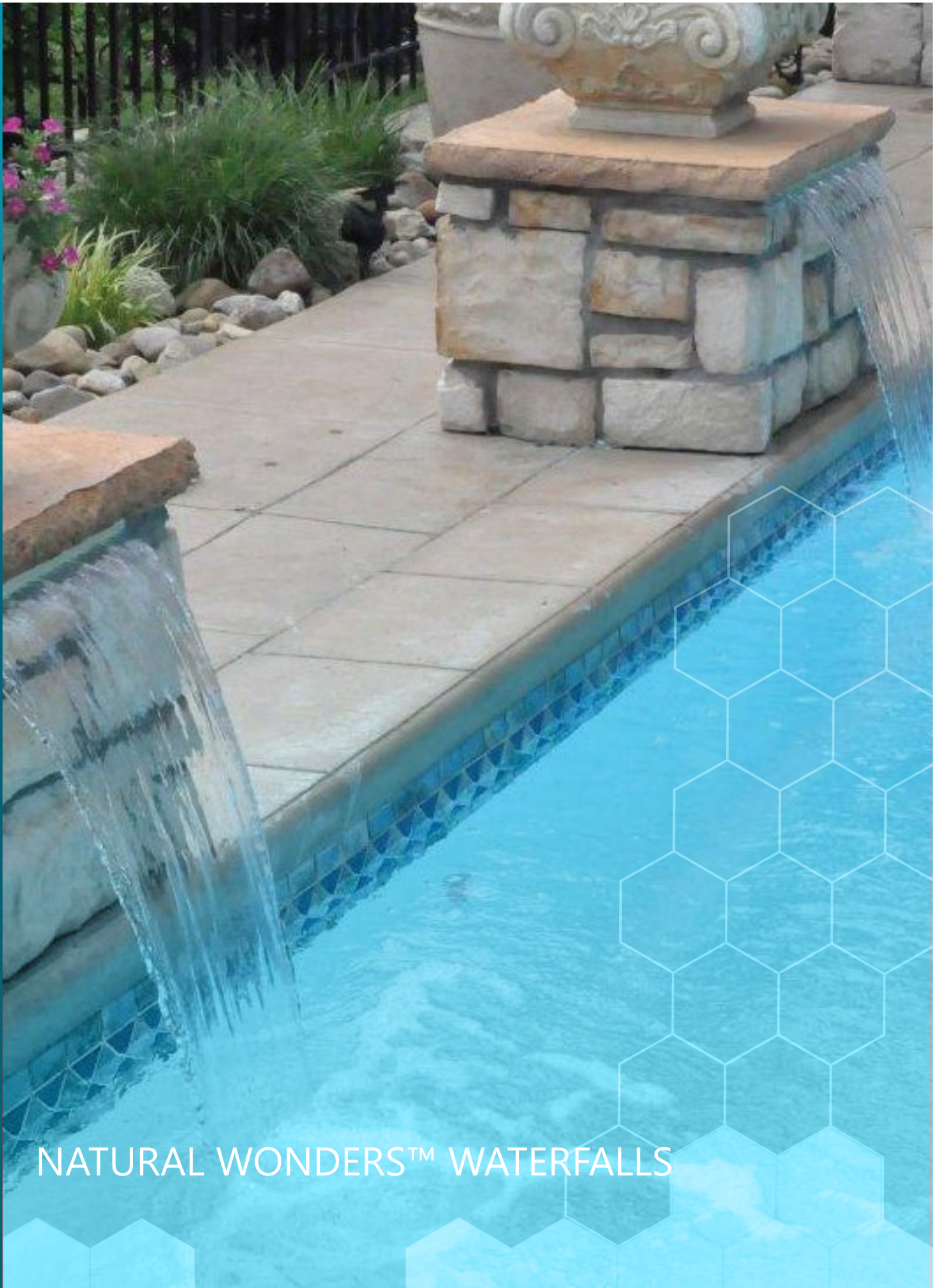
WHITE	TAN	GRAY	DESCRIPTION	WIDTH (W)	LENGTH (L)
BACK PORT WATERFALLS (continued)					
25577-220-000	25577-229-000	25577-221-000	24" with 1" Lip	3.15"	24.13"
25577-230-000	25577-239-000	25577-231-000	24" with 6" Lip	8.07"	
25577-230-900	25577-239-900	25577-231-900	24" with 9" Lip	11.07"	
25577-230-120	25577-239-120	25577-231-120	24" with 12" Lip	14.07"	
25577-170-000	25577-179-000	25577-171-000	18" with 1" Lip	3.15"	18.23"
25577-180-000	25577-189-000	25577-181-000	18" with 6" Lip	8.07"	
25577-180-900	25577-189-900	25577-181-900	18" with 9" Lip	11.07"	
25577-180-120	25577-189-120	25577-181-120	18" with 12" Lip	14.07"	
25577-120-000	25577-129-000	25577-121-000	12" with 1" Lip	3.15"	12.36"
25577-130-000	25577-139-000	25577-131-000	12" with 6" Lip	8.07"	
25577-130-900	25577-139-900	25577-131-900	12" with 9" Lip	11.07"	
25577-130-120	25577-139-120	25577-131-120	12" with 12" Lip	14.07"	
BOTTOM PORT WATERFALLS					
25576-420-000	25576-429-000	25576-421-000	48" with 1" Lip	3.15"	47.36"
25576-430-000	25576-439-000	25576-431-000	48" with 6" Lip	8.07"	
25576-430-900	25576-439-900	25576-431-900	48" with 9" Lip	11.07"	
25576-430-120	25576-439-120	25576-431-120	48" with 12" Lip	14.07"	
25576-320-000	25576-329-000	25576-321-000	36" with 1" Lip	3.15"	35.67"
25576-330-000	25576-339-000	25576-331-000	36" with 6" Lip	8.07"	
25576-330-900	25576-339-900	25576-331-900	36" with 9" Lip	11.07"	
25576-330-120	25576-339-120	25576-331-120	36" with 12" Lip	14.07"	
25576-220-000	25576-229-000	25576-221-000	24" with 1" Lip	3.15"	24.13"
25576-230-000	25576-239-000	25576-231-000	24" with 6" Lip	8.07"	
25576-230-900	25576-239-900	25576-231-900	24" with 9" Lip	11.07"	
25576-230-120	25576-239-120	25576-231-120	24" with 12" Lip	14.07"	
25576-170-000	25576-179-000	25576-171-000	18" with 1" Lip	3.15"	18.23"
25576-180-000	25576-189-000	25576-181-000	18" with 6" Lip	8.07"	
25576-180-900	25576-189-900	25576-181-900	18" with 9" Lip	11.07"	
25576-180-120	25576-189-120	25576-181-120	18" with 12" Lip	14.07"	
25576-120-000	25576-129-000	25576-121-000	12" with 1" Lip	3.15"	12.36"
25576-130-000	25576-139-000	25576-131-000	12" with 6" Lip	8.07"	
25576-130-900	25576-139-900	25576-131-900	12" with 9" Lip	11.07"	
25576-130-120	25576-139-120	25576-131-120	12" with 12" Lip	14.07"	

*All "L" dimensions are +/- 0.33"

IMPORTANT

Natural Wonders waterfalls are to be used only with filtered water. 12" and 18" waterfalls should be no more than 12" above the water line. Waterfalls over 60" have multiple water inlets. Call customer service for more information. **12", 9" & 6" lip waterfalls may be radius cut.** Please refer to the instructions included with the waterfall.

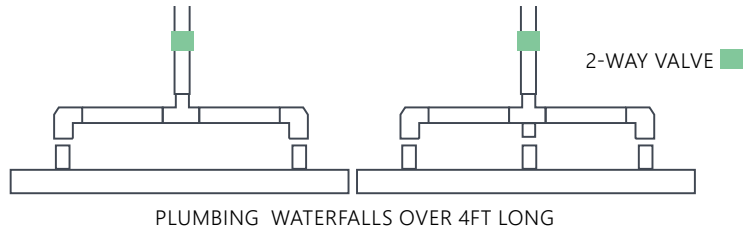
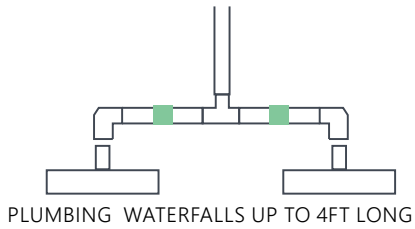




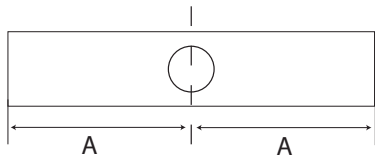
NATURAL WONDERS™ WATERFALLS

NATURAL WONDERS™ WATERFALLS

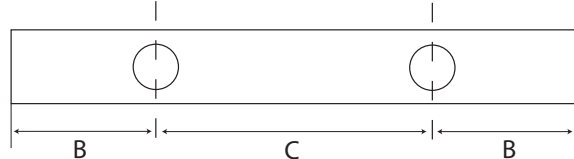
PLUMBING GUIDE



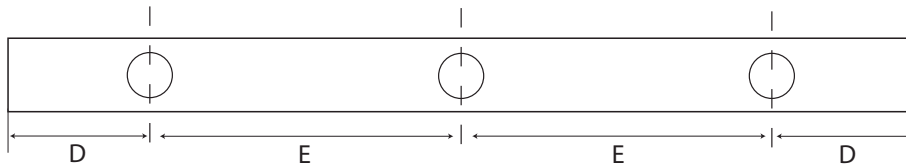
INLET SPACING GUIDE



For 12" falls A = 6-11/32"
 For 18" falls A = 9-9/32"
 For 24" falls A = 12-3/16"
 For 36" falls A = 18-1/8"
 For 48" falls A = 23-15/16"



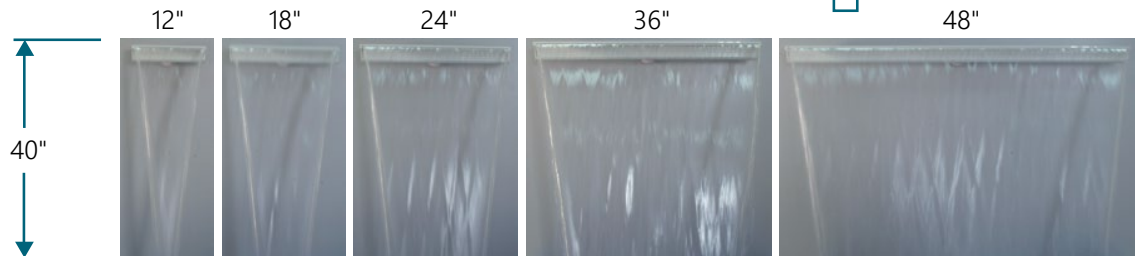
For 60" falls B = 18-1/4" & C = 23-11/32"
 For 72" falls B = 19-27/32" & C = 31-15/16"



For 84" falls D = 18-1/32" & E = 23-5/8"
 For 96" falls D = 19-31/32" & E = 27-9/16"



PERFORMANCE GUIDE: BACK & BOTTOM PORT



PERFORMANCE GUIDE: BACK PORT ONLY

